

Platinum:

Interface Flooring

OM Workspace

Shaw Contract

Silver:

Crescent Cleaning

**Deborah Zeitler
Associates**

Henricksen

Johnsonite

Noland Sales

TKA + Partners

October 3, 2006—Libertyville Sports Center 45 Tempel Dr Libertyville, IL

Topic: MODULAR INTERIORS & THE ENVIRONMENT

About our Program:

Members will delve into the economic and design viability of creating a sustainable commercial office interior by using modular architectural interiors and furniture. This presentation demonstrates that this approach not only encourages good design, but helps give clients insight on how design can help their bottom-line and create an environmentally sustainable interior now and going forward.

The objective of this presentation is to first discuss the extraordinary environmental waste produced by commercial office interiors. Then look at the sustainable and economically viable method of modular interior construction. Finally, attendees will learn that modular interiors can give designers excellent opportunities to create unique spaces that provide clients with real bottom-line benefits.

About our Speaker:

Ken Kirk has been involved in the contract furniture for 29 years and has worked for a variety of companies that includes Stow Davis, Atelier International, Smed and Haworth. Ken has been with SMED/Haworth since 1988 in a number of positions which include sales, seating development, sales management and architectural specialist and architectural director.

Ken's primary focus since 1998 has been the introduction of the constructive solutions concept to the marketplace. Constructive solutions addresses the benefits and execution of high performance interiors to address the changing needs of corporate clients.

He has worked with firms like National Demographics and Lifestyles, Halliburton, Simplot, Amgen, Big D construction and many other clients in addressing specific issues of ergonomics, custom requirements, flexible interiors and high performance real-estate. His current duty is to work with existing clients, consultants, representatives and distribution in executing adaptable interiors.

Ken has presented the concept of high performance interiors to IFMA chapters in Texas and California

About our Host Site:

The concept for the Sports Complex can from a 1998 Libertyville resident survey regarding recreation. Total indoor space: Indoor Sports Complex 168,000 square feet (to our knowledge the largest publicly owed Rec facility in the Midwest)/ Largest Climbing wall in the US (total climbing area, not height).

** Bring workout clothes if you wish. We will be able to climb the rock wall from 5:15 until 6:15.

Agenda

5:00 p.m. Networking

6:30 p.m. Dinner

7:15 p.m. Program

Cost: \$25 members \$30 guests

Inside this issue:

President's Message	3
Networking Event	4
Congratulations!	5
Regional Facilities Engineer	5
NI Calendar	6
Mark your FM Calendar	7

Sponsors

Platinum Sponsor:

Shaw S|C

Interface



QMI
Workspace

Silver Sponsor:

Johnsonite



Deborah Zeitler Associates, Inc.

Henricksen
orchestrating workspace solutions

TKA  **Partners**

N S C
NOLAND SALES CORP.


crescentcleaningcompany

President's Message—Bill Brow, CFM, FMA, SMA

Greetings NI Chapter members!

October means shorter daytime hours, a noticeable change in weather, football, and Halloween. It also means World Workplace for IFMA members. This year, for those attending WWP, we'll get a chance to escape the cool weather for a few days and enjoy San Diego, CA and warmer temps. In addition to all the events surrounding World Workplace, Northern Illinois Chapter, in conjunction with the Chicago and Central Illinois Chapters will be having a networking event at the J-Six Bar in the Gas Lamp Quarter of San Diego. This should be a great event judging from our past networking parties with the Chicago Chapter at World Workplace. If you will be attending WWP, please communicate to Kathy Daloia, our Chapter Administrator, where you will be staying and a cell or pager number, where you can be reached by other chapter members. Also, if you are attending the banquet on Tuesday evening at WWP, make sure you get your banquet tickets to me or to Kathy, as soon as possible so that a place at the NI Chapter tables will be reserved for you. See the newsletter listings for the addresses.

Apart from the networking and fun, World Workplace is a chance for facility managers to learn from other facility managers and experts in their fields about topics of interest concerning our chosen profession. It is from these communications that we are allowed the opportunities to become better at what we do. For professional members, like myself, it is the key reason we became members of IFMA and the Northern Illinois Chapter—to learn from and share with others in the field. This event concentrates that experience into a few days, but the NI Chapter continues the learning and networking throughout the year for its members. We hope you take advantage of all the opportunities that the chapter provides, with monthly meetings and topic presentations, CFM review sessions, to learning seminars and, coming soon, webinars at a common location.

Communication is so important to everyone, and there are so many means available to all of us now, that you sometimes wonder why it doesn't happen—especially when the actions you take are dependent upon someone communicating in a timely manner to you. Facility managers are all too familiar with this concept. A building occupant



2006—2007 IFMA NI BOARD

President Bill Brow, CFM, FMA, SMA American Association of Oral and Maxillofacial Surgeons 847-233-4355	Archivist Mike Jurczykowski Chicago Records Management 847-678-0002	Community Services Open	Newsletter Greg Toste, CFM Enterprise Rent-a-Car 630-693-2948
Vice President Dave Falls, CFM WW Grainger 847-535-0441	Associate Deb Radek Deborah Zeitler & Assoc. 312-670-2177	Education Open	Program Michael DeCaluwe
Secretary Seaby Bess Door Systems 630-250-0101	Tom Ziegler Henricksen Interiors 630-250-9090	Hospitality Ron Zingler Invensys Appliance Controls 630-260-3036	Public Relations Open
Treasurer Julie Bizer Van Kampen Investments 630-684-6247	Awards Open	Membership Kathy Cifrino Office Management Advisers 847-985-3222	Seminar Marc Adelman, AIA, CFM Thompson, Ventulett, Stainbeck & Associates 312-201-3335
Advisor Tom Kapusta, AIA TKA + Partners 312-463-1600 x 603	Career Services Open	Networking Ted Kubek, CFM DeVry 630-706-3106	Webmaster Cecilia Herdegen, CFM Audit Bureau of Circulations 847-879-8252
			Chapter Administrator Kathy Daloia 847-821-8243

President's Message (Cont.)

forgets to tell, email, phone or otherwise communicate to you that he will be coming into the building to work over the weekend and you get the call on Saturday at your daughter's birthday party that he needs lights and air conditioning turned on. Please help us to help you by communicating any ideas or improvements that will help make your membership more valuable to you.

I am hesitant to mention it while the weather is still nice, but the holidays are right around the corner, and the plans for the Northern Illinois Holiday Party are in full swing. Our new committee member, Sue Wagoner, has taken on the responsibility for planning this event, and from everything we have heard, it will be a great event and one you won't want to miss. Stay tuned for details!

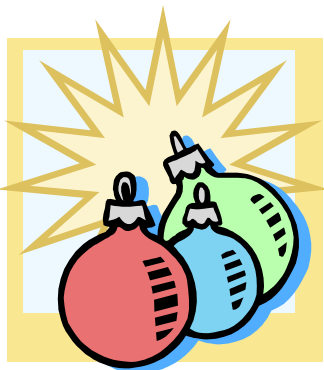
I hope to see you at the next monthly meeting or in San Diego!

Networking Event in San Diego



Our Networking Committee has been working hard on our networking event in San Diego. Please join our chapter and the Chicago Chapter in welcoming the Central Illinois Chapter to our event. Our event is being held this year at J Bar located at 616 J Street on the 4th floor. The event will begin at 5:30. Please RSVP to our chapter administrator at chapteradministrator@ifmani.com or call 847-821-8243.

Please be sure to send your banquet tickets to Bill Brow at AAOMS, 9700 Bryn Mawr, Rosemont, IL 60018-5701. Also, be sure to let our chapter administrator



Mark your Calendars!!!

Holiday Gala

December 5, 2006

6:00—10:00

Medinah Banquet in Addison

Watch your e-mail and our website for further details

Congratulations!!

Congratulations to Ira Marcus, CFM of Sears Holdings on being named to the 2006 Class of Fellows. He is the first NI member to receive this honor.

The most prestigious title bestowed by the Association is that of IFMA Fellow. Fellowship recognizes outstanding contribution and services rendered to the Association. Fellowship creates an elite core of respected leaders who can be called upon to act as advisors to and ambassadors for the association.



CORP Regional Facilities Engineer II Available

Job Description

Brady Overview:

Brady Corporation a 1B global company with products that identify and protect products, premises and people has an exciting opportunity for an experienced Regional Facilities Engineering Manager. Responsible for project management, procedures and contracts for multiple locations in the Americas region including office, warehouse and manufacturing facilities. Engineering projects will include but are not limited to remodeling, expansion/consolidation, energy management, electrical distribution, fire protection, HVAC, pavement, roofing, and facility planning and asset management. Provide project management oversight for assigned projects including developing project plans, obtaining and evaluating contractor quotes, preparing capital expenditure requests, and providing project supervision.

Job Requirements:

Requires the level of educational development normally acquired through completion of a bachelor's degree in engineering or related field.

Must have a minimum of 5 years facility engineering experience preferably in the following areas: project management of remote site engineering projects, electrical distribution, HVAC, facility planning and remodeling, and preparing project plans including budgeting.

Previous experience managing facility projects utilizing outside contract resources highly desirable.

Job Duties:

Creates, implements & administers, procedures & contracts for multiple business units and plant locations in the Americas region. Takes a lead role in managing building processes such as; HVAC systems, dust and fume collection systems, electrical distribution, facility security systems, pavement, roofing, fire protection systems, & life safety automation

systems in the Americas region indirectly; and directly in the greater Milwaukee area. Functions as a Company liaison between Brady and FM Global Insurance for the Americas under the direction of the Manager of Facilities Engineering. Works through contractors to assure these programs, procedures, and contracts are performed to budget in a timely manor.

Supervises the preparation of building budgets, prepares building budget proposals for future fiscal years. Assists in the development, planning and direct management of major expense & capital projects including the coordination of business unit projects requiring facility system upgrade & modification. Obtains & evaluates contractor quotes, reviewing information, terms & conditions, quotations and contracts with the appropriate individuals as required by project impact. Prepares capital expenditure requests for approval in support of related project work under the direction of the Facilities & Property Lead Engineer, providing direct project supervision to internal and external resources as required. Maintains all facility paper drawings and documentation in a central file, and all electronic documentation in a centralized shared computer drive. Provides Auto Cad electronic drawing support as required by the project.

The ability to travel within the Americas region up to 30 % to support project management work is required.

Contact Person: Terrence Egerson

Phone: 414-228-5965

E-mail: terrence_egerson@bradycorp.com

Libertyville Sports Complex



From the North:
 Take I-94 southbound, exit Milwaukee Avenue (Rt 21), go south (turn right). Proceed on Milwaukee to Peterson Rd go West (right at the stoplight). Follow Peterson Rd as it forks to the right to Highway 45, go North (right turn at the stoplight). Sports Complex will be on your right.

From the South:
 Take I-294 to I-94 North. Exit Route 137 go west (turn left). Proceed on Rt 137 (Peterson Rd), cross over Milwaukee Ave., follow Peterson Rd as it forks to the right to Highway 45. Go north on Highway 45 (right turn at the stoplight), the Sports Complex will be on your right.

NI CALENDAR

October 3
 Monthly General Meeting
Libertyville Sports Center
 Libertyville, IL

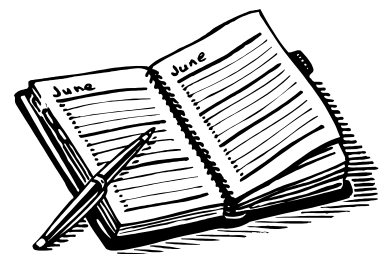
October 8-10
 World Workplace 2006
 San Diego Convention Center
 San Diego, CA

November 7
 Monthly General Meeting
Sara Lee Food Service

December 5
Holiday Gala
 Medinah Banquets in Addison

October 24-26, 2007
World Workplace
 Morial Convention Center
 New Orleans, LA

2006—07 IFMA NI Board Meetings
September 13
October 18
November 15
December 5
January 17, 2007
February 14
March 14
April 11
May 9
June 13



Mark your FM Calendar

Mark Your FM Calendar

note: the following information is provided solely as a convenient listing for IFMA/NI members. Further details may be learned by contacting each group as listed below.

September 21-22

The Essentials of OSHA Compliance 2006
Holiday Inn
Oakbrook Terrace, IL
National Seminars Group
(800) 258-7246
www.nationalseminarstraining.com

September 25-26

The 2005 National Electrical Code
Elk Grove, IL
American Trainco
(877) 978-7246
www.americantrainco.com

September 27-28

Pumps & Pump Systems
Elk Grove, IL
American Trainco
(877) 978-7246
www.americantrainco.com

September 28-29

The Essentials of OSHA Compliance 2006
Holiday Inn Express
Arlington Heights, IL
National Seminars Group
(800) 258-7246
www.nationalseminarstraining.com

October 2-3

Troubleshooting HVAC Controls & Air Distribution
Elk Grove, IL
American Trainco
(877) 978-7246
www.americantrainco.com

October 3-4

The Complete Course on Facilities Management
Cliffbreakers
Rockford, IL
Keye Productivity Center
(800) 258-7246 www.nationalseminarstraining.com

October 3-5

Metalcon International
Tampa Convention Center
Tampa, FL
www.metalcon.com

October 3-5

Boilers: An Operator's Workshop
Joliet, IL
National Technology Transfer, Inc.
(800) 922-2820 www.nttinc.com

October 5-6

The Complete Course on Facilities Management
Holiday Inn
Oakbrook Terrace, IL
Keye Productivity Center
(800) 258-7246 www.nationalseminarstraining.com

October 8-10

IFMA World Workplace 2006
San Diego Convention Center
San Diego, CA
www.worldworkplace.com

October 10-11

Understanding Variable Frequency Drives
Joliet, IL
American Trainco
(877) 978-7246
www.americantrainco.com

October 10-12

Boilers: An Operator's Workshop
Elgin, IL
National Technology Transfer, Inc.
(800) 922-2820 www.nttinc.com

October 12-13

Programmable Logic Controllers for Non-Programmers
Joliet, IL
American Trainco
(877) 978-7246
www.americantrainco.com

October 17-18

Hazardous Waste Management: The Complete Course
Wyndham O'Hare
Environmental Resource Center
(800) 537-2372
www.ercweb.com

October 17-19

Boilers: An Operator's Workshop
Elk Grove, IL
National Technology Transfer, Inc.
(800) 922-2820 www.nttinc.com

October 19

DOT Hazardous Materials Training
Wyndham O'Hare
Environmental Resource Center
(800) 537-2372
www.ercweb.com

October 23-24

Building & Grounds Security for Facility Management
Chicago, IL
American Trainco
(877) 978-7246
www.americantrainco.com

October 23-27

OSHA Safety Training
Holiday Inn City Center
Chicago, IL
National Seminars Training
(800) 258-7246
www.nationalseminarstraining.com

Mark your FM Calendar Continued.....

October 23-27

OSHA Safety Training
Holiday Inn City Center
Chicago, IL
National Seminars Training
(800) 258-7246
www.nationalseminarstraining.com

October 25-26

Disaster Preparedness for Facility Management
Chicago, IL
American Trainco
(877) 978-7246
www.americantrainco.com

October 25-27

Energy Modeling for High Performance Buildings
The Pyle Center
Madison, WI
College of Engineering/
Department of Engineering Professional Development
University of Wisconsin-Madison
<http://epd.engr.wisc.edu/webH401>

October 26-27

Academic Science Buildings
San Diego, CA
Tradeline Inc.
(925) 254-1744 x 12
www.tradelineinc.com/conferences

October 30-31

Implementing Total Productive Maintenance (TPM) and 5S
Chicago, IL
American Trainco
(877) 978-7246
www.americantrainco.com

November 1-2

The Green Building Process: Real-World Strategies and tools
The Pyle Center
Madison, WI
College of Engineering/
Department of Engineering Professional Development
University of Wisconsin-Madison
<http://epd.engr.wisc.edu/webH401>

November 1-2

Inventory Control for Maintenance
Chicago, IL
American Trainco
(877) 978-7246
www.americantrainco.com

November 6-7

Managing Construction Projects
Fluno Center for Executive Education
Madison, WI
University of Wisconsin-Madison
Executive Education-School of Business
(800) 348-8964 uwexeced.com

November 8-10

Controlling Construction Costs
Fluno Center for Executive Education
Madison, WI
University of Wisconsin-Madison
Executive Education-School of Business
(800) 348-8964 uwexeced.com

November 13-14

Animal Research Facilities
San Antonio, TX
Tradeline Inc.
(925) 254-1744 x 12
www.tradelineinc.com/conferences

November 13-15

Business Continuity Planning & Emergency Preparedness
Crowne Plaza Union Square
San Francisco, CA

(800) 882-8684 www.iqpc.com/managementiq

November 14-15

The Complete Course on Facilities Management
Best Western Chicago West
Elk Grove Village, IL
Keye Productivity Center
(800) 258-7246 www.nationalseminarstraining.com

November 15-17

Preventive Maintenance and Repair of Buildings and Grounds
The Pyle Center
Madison, WI
College of Engineering/
Department of Engineering Professional Development
University of Wisconsin-Madison
(800) 462-0876 <http://epd.engr.wisc.edu/>

November 28-December 1

The National Ergonomics Conference and Exposition
The Productivity Show
Caesars Palace
Las Vegas, NV
Continental Exhibitions Inc.
www.ergoexpo.com

April 17-19, 2007

The TFM Show
Navy Pier
Chicago, IL
www.thetfmshow.com

June 11-13, 2007

NeoCon
Merchandise Mart
Chicago, IL
www.neocon.com

October 24-26, 2007

World Workplace 2007
Morial Convention Center
New Orleans, LA
www.worldworkplace.com